

TECHNICAL DATA SHEET

Neusilin® S1/S2



Neusilin® - The Specialty Excipient

A synthetic magnesium aluminometasilicate (MAS) with exceptional excipient properties for improving actives delivery and quality of pharmaceutical preparations.

Key Features

- Stabilizer
- Improves tablet and powder capsule quality
- Compact tablets with relevant hardness

General Properties

Grade	*S1 / S2	
General name	Magnesium Aluminometasilicate	
Appearance	White granule	
Form	Amorphous	
Solubility	Practically insoluble in water and ethanol	
Composition (%) on dried basis	Al ₂ O ₃	29.1 - 35.5
	MgO	11.4 - 14.0
	SiO ₂	29.2 - 35.6
Degree of whiteness	> 95	> 95
Bulk density	Loose (g/ml)	0.30 - 0.37
	Tapped (g/ml)	0.36 - 0.43
True specific gravity	2.0	2.2
Specific surface area (m ² /g)	110	110
Average particle size (µm)	112	115
Angle of repose (°)	30	30
Oil adsorbing capacity (ml/g)	1.3	1.4
Water adsorbing capacity (ml/g)	1.0	1.2
Acid consuming capacity (ml/g)	≥210	≥210
pH 4% slurry	8.5 - 10.0	8.5 - 10.0

*S1: high water content
S2: low water content

Application / function	Quantity (%)
Excipient / diluent	30 - 90
Tablet - binder, disintegration aid, increase hardness	1 - 10

Pharmacopoeia & Regulatory

Neusilin® meets all requirements of the current USP/NF and JP. US DMF Type IV filed.

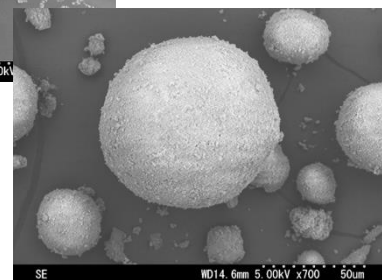
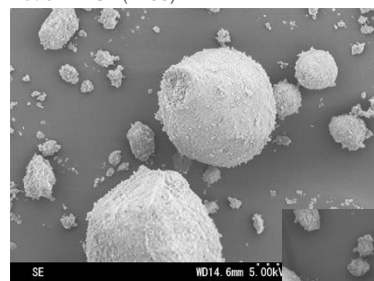
Handling & Storage

Packaging: 20 kg double-lined Kraft bags

Storage: Store at room temperature and avoid high humidity.

Shelf life: 3 years from the date of manufacture stored in recommended conditions.

Neusilin® S1 (x700)



Neusilin® S2 (x700)

Typical Application and Quantity Required



Shibakoen Ridge Building 2nd Floor, 1-8-21 ShibaKoen, Minato-ku, Tokyo
105-0011 JAPAN Tel: +81-3-3437-2350 Fax: +81-3-3437-2347
www.fujichemical.co.jp/english

Neusilin® is a registered trademark of Fuji Chemical Industries Co., Ltd. Information found is presented in good faith with no guarantee or obligation as to accuracy and no assumption of liability. The information herein does not imply a performance warranty.

TDS-NE S1S2
2108-05

Neusilin®